

2028
Monument Ave

Richmond, VA
23220

Joyner Fine Properties







Joyner Fine Properties Presents:

2028

Monument Avenue

Richmond, VA 23220

Stellar renovations combined with masterful architectural elements throughout

NOTEWORTHY FEATURES

Stunning architectural details including turned staircase with two

Juliet balconies + diamond paned windows throughout.

Extensive renovations throughout 2015/2016 including kitchen,

bathrooms & lighting.

Fully fenced rear yard with Easy Turf by Forever Lawn provides

special drainage + irrigation. Ideal for pets and low maintenance.

Full basement (885 sq. ft.) with good ceiling height & ample

storage.

Two HVAC units replaced in 2019.

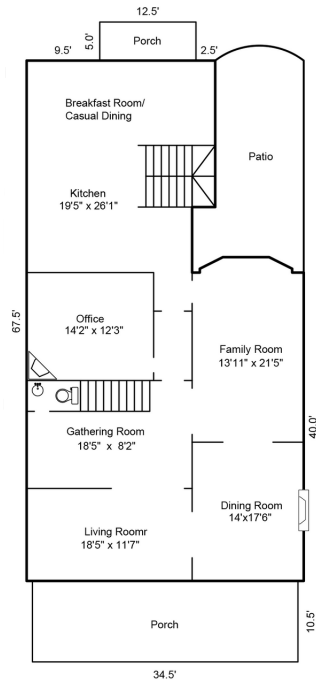
Recently rebuilt 2nd floor rear deck with composite material.





MAIN LEVEL

2,108 SQ FT







MAIN LEVEL HIGHLIGHTS

CUSTOM SHELVING IN LIVING ROOM

FAMILY ROOM WITH BAY WINDOW

PRIVATE OFFICE WITH CORNER FIREPLACE

LOVELY CENTRAL TURNED STAIRCASE

CHEF'S KITCHEN WITH WOLF &

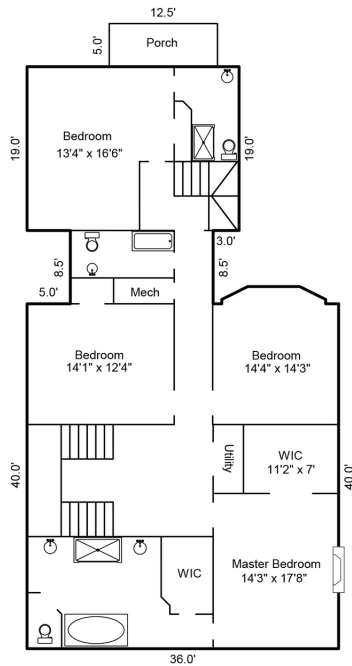
SUBZERO + SUN-FILLED CASUAL

DINING AREA



SECOND LEVEL
2,065 SQ FT

SECOND LEVEL
2,065 SQ FT







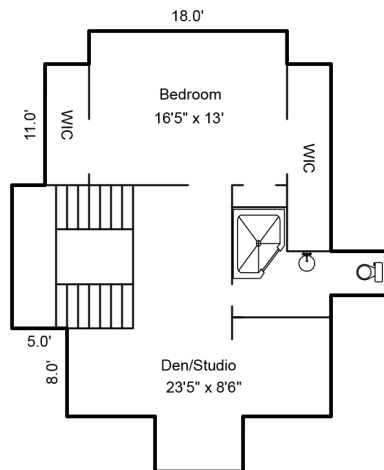
SECOND LEVEL HIGHLIGHTS

MASTER SUITE WITH 2 WALK-IN
CLOSETS + FRONT BALCONY
MASTER BATH SOAKING TUB + STEAM
SHOWER WITH JETS
DOUBLE CLOSET LAUNDRY
BEDROOM #4 WITH PRIVATE BATH
REAR STAIRCASE TO KITCHEN



THIRD LEVEL

969 SQ FT





THIRD LEVEL HIGHLIGHTS

HEART PINE FLOORING

DEN/STUDIO WITH WINDOW SEAT

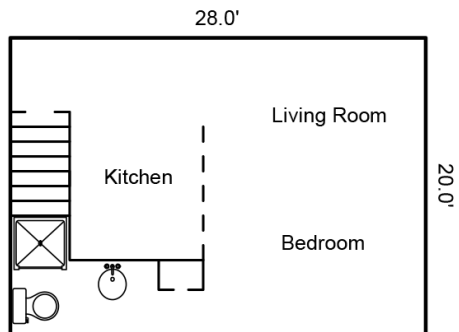
BEDROOM #5 WITH 2 CLOSETS

FULL BATH WITH SHOWER

GOOD STORAGE

CARRIAGE HOUSE

560 SQ FT



Carriage House Apartment
560 SF





EXTERIOR

0.14 ACRES





EXTERIOR HIGHLIGHTS

CARRIAGE HOUSE WITH KITCHEN &

FULL BATH

2 CAR GARAGE WITH HVAC

FULLY FENCED REAR YARD

SIDE SLATE TERRACE

2 TIERED COVERED REAR PORCH

PROPERTY SPECIFICS

Legal Description: W000-0953-038

Date of Construction: 1910 with extensive renovations in 2015/2016

Square Footage: 5,142 square feet in main house + 560 sq. ft. in carriage

house apartment per appraiser

Roofing: Slate

Heating: 3-zone Heat Pump/ Mini-split in carriage house

Heat Source: Electric

Cooling: 3-zone Central Air

Water/Sewer: Public

Taxes: \$19,980

Fox Elementary ~ Binford Middle ~ Jefferson High

Note to Realtors:

Although no known defects, fireplace chimneys & fireplace flues convey "as-is".

Chandeliers in Master Bedroom & Master Bath do not convey.

Seller must close December 16, 2020 or later.



www.BetsyDotterer.com



BETSY DOTTERER
REALTOR

804.839.5907
319 Maple Ave
Richmond, VA 23226
Betsy.Dotterer@Joynerfp.com

