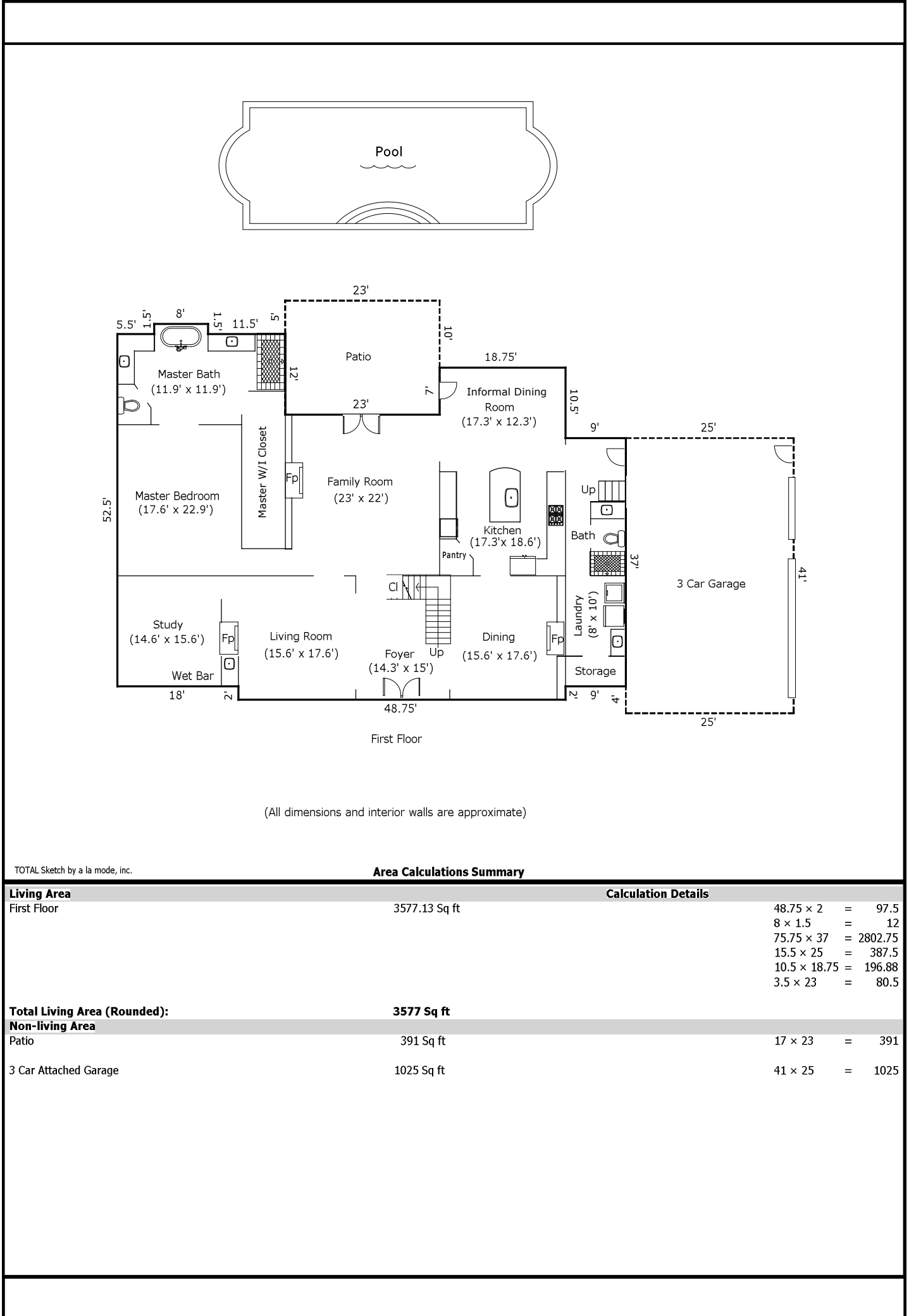


1004 MIDDLE QUARTER COURT

FLOOR PLAN: FIRST LEVEL

TOTAL FINISHED SQUARE FEET = 7007
UNFINISHED THIRD LEVEL = 1563 SQUARE FEET

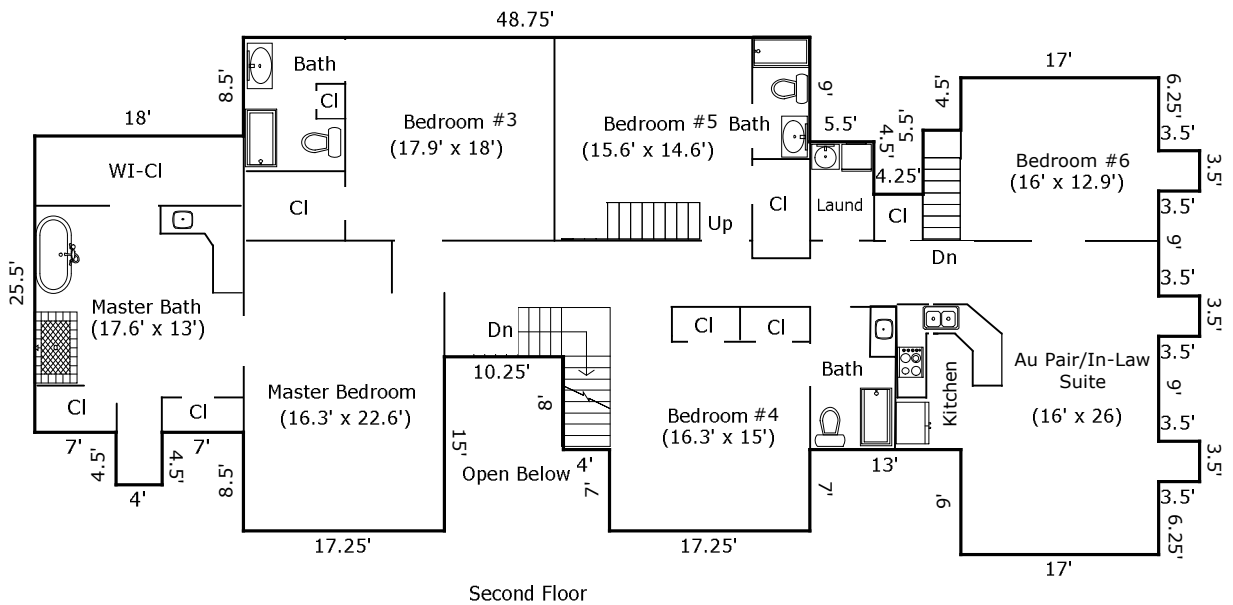


TOTAL Sketch by a la mode, inc.

Area Calculations Summary

Living Area	Calculation Details	
First Floor	3577.13 Sq ft	$48.75 \times 2 = 97.5$ $8 \times 1.5 = 12$ $75.75 \times 37 = 2802.75$ $15.5 \times 25 = 387.5$ $10.5 \times 18.75 = 196.88$ $3.5 \times 23 = 80.5$
Total Living Area (Rounded):	3577 Sq ft	
Non-living Area		
Patio	391 Sq ft	$17 \times 23 = 391$
3 Car Attached Garage	1025 Sq ft	$41 \times 25 = 1025$

1004 MIDDLE QUARTER COURT FLOOR PLAN: SECOND LEVEL



(All dimensions and interior walls are approximate)

TOTAL Sketch by a la mode, inc.

Area Calculations Summary

Living Area	Area	Calculation Details
Second Floor	3429.5 Sq ft	$17.25 \times 7 = 120.75$ $4 \times 4.5 = 18$ $3.5 \times 3.5 = 12.25$ $3.5 \times 3.5 = 12.25$ $3.5 \times 3.5 = 12.25$ $25.5 \times 18 = 459$ $41 \times 17 = 697$ $17.25 \times 15 = 258.75$ $27.5 \times 27.5 = 756.25$ $34.25 \times 22 = 753.5$ $5.5 \times 3.25 = 17.88$ $4.5 \times 5.5 = 24.75$ $13.5 \times 21.25 = 286.88$
Total Living Area (Rounded):	3430 Sq ft	