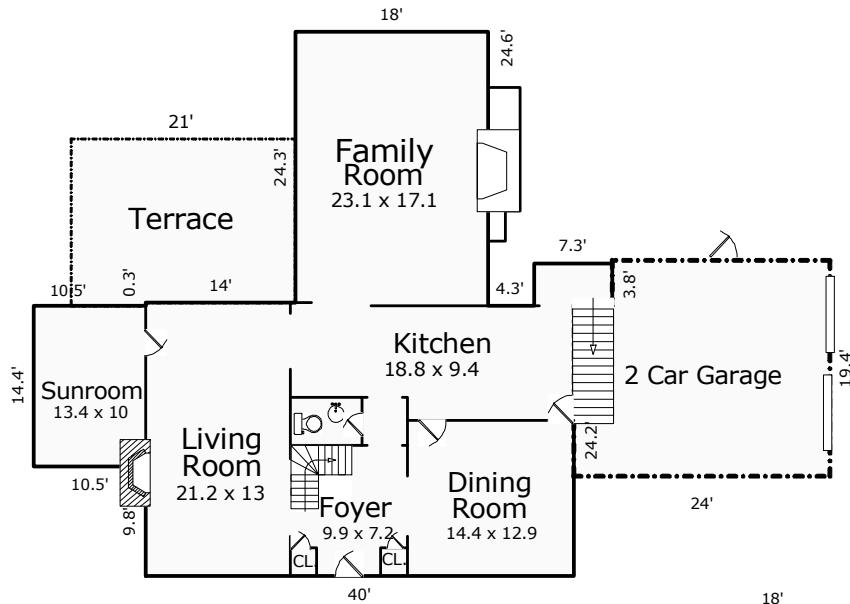
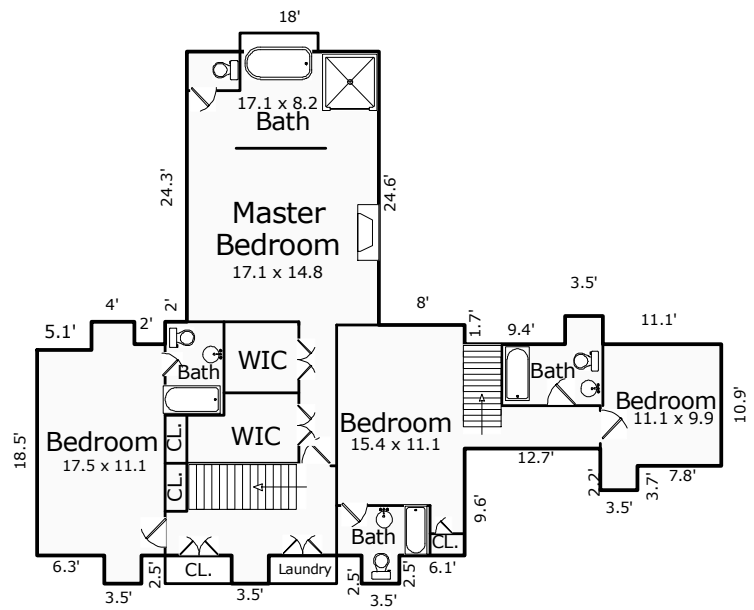


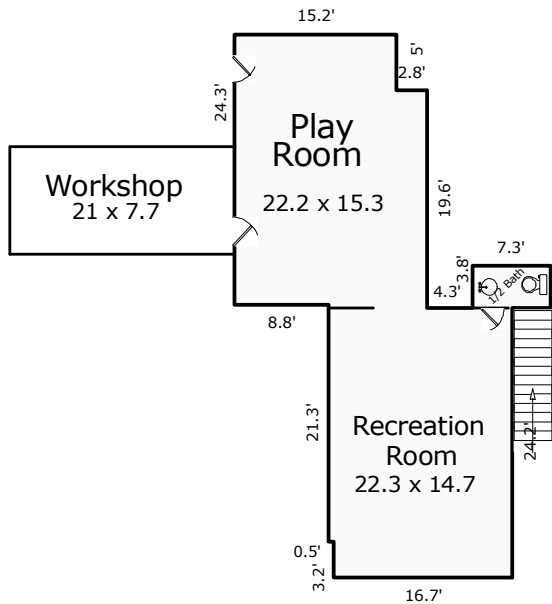
Floor Plan 316 Clovelly Road



Main Level



Upper Level



Basement

Lower Level

Total Finished Area is 4006 Sq.Ft.
Finished Basement is 869 Sq.Ft.

*Square Footage is determined using exterior measurements.
 *Room dimensions are based on interior "wall to wall" measurements.
 Measurements are performed according to ANSI standards.